



Sunstone

— PEMBERTON —

Live RURAL
Pemberton, BC

Live CLOSE
2hrs from Vancouver

Live CONNECTED
Fibre optic

ROOM TO GROW

Imagine a thoughtfully-planned neighbourhood on a sunny, south facing forested hillside, surrounded by spectacular views of Mount Currie and the Pemberton Valley below.

Integrated with its natural setting, Sunstone includes green space, trails and recreational amenities.

With lots ranging from 8,900 sq ft to 24,700 sq ft, you'll have plenty of room to grow!





MASTER PLANNED

Building lots carefully planned and positioned to provide stunning views of Mount Currie and the Pemberton Valley.



AMENITIES

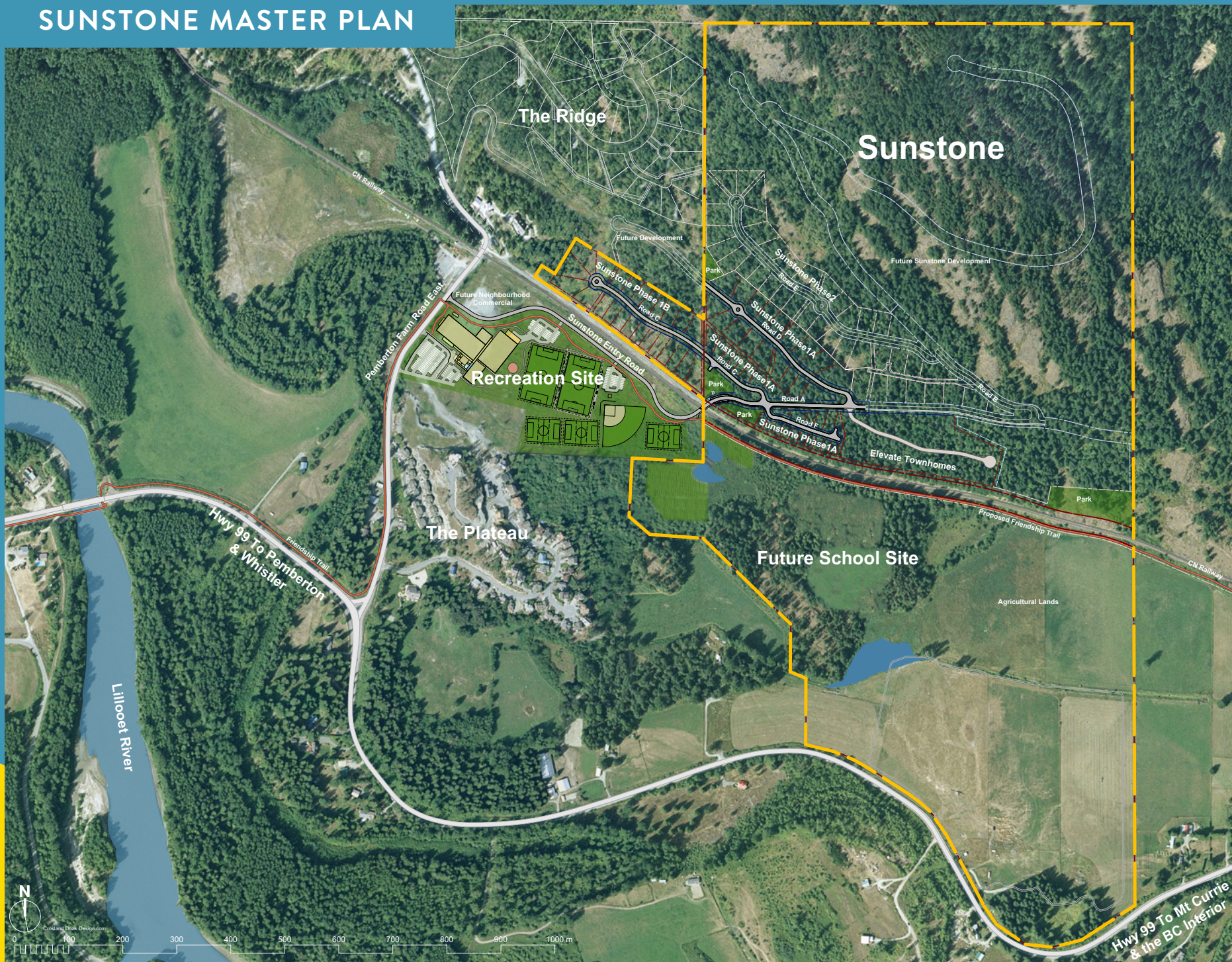
Green space, parks, community garden and easy access to hiking and biking trails from your backyard, along with recreational amenities such as fields and the Friendship Trail.



COMMUNITY

Proximity to lakes, rivers, farms, dining, shopping and a golf course, as well as recreational amenities and new Friendship Trail.

SUNSTONE MASTER PLAN



PHASE 1B SITE MAP





Master planned building lots
carefully planned and positioned
to provide stunning views of
Mount Currie and the Pemberton Valley

•

Phase 1A sold out

•

Phase 1B - build ready single family lots
from \$309,000

•

Fee simple (no strata fees)

•

Located above the valley floor with
all day sun exposure

•

Adjacent to recreational amenities
and new Friendship Trail

•

Easy access to hiking and biking trails
right from your backyard

•

Favourable site conditions,
underground servicing (Village of
Pemberton sewer and water),
rolled curb and gutter

REGISTER YOUR INTEREST TODAY AT sunstonepemberton.com



Keith McIvor

604-935-2650 | 1-800-667-2993

The developer reserves the right to make changes and modifications to the project design, specifications and features without notice. E&O.E.
This advertisement does not constitute offers of sale capable of acceptance without a Disclosure Statement.